

ACCESS Joint Committee

Date: 9 September 2019

Report by: Officer Working Group

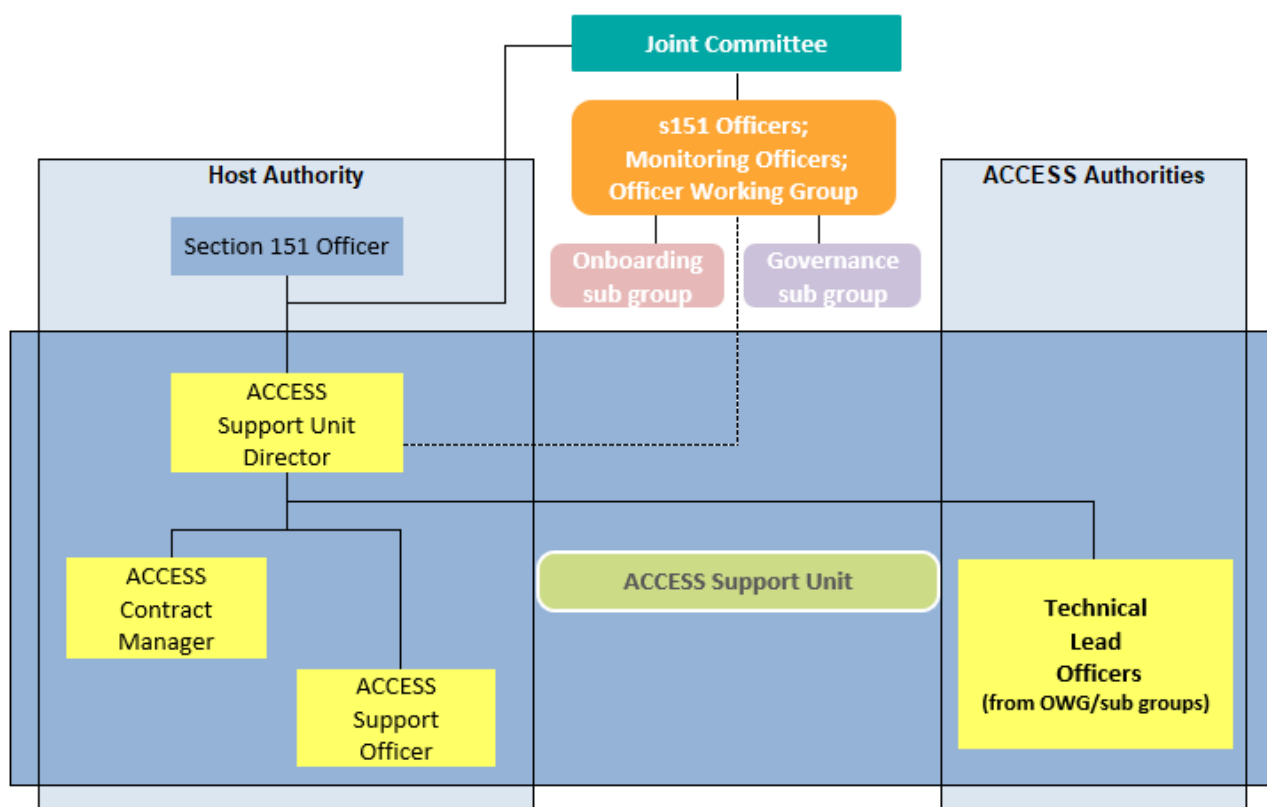
Subject:	ACCESS Support Unit (ASU)
Purpose of the Report:	To provide an update on developments regarding recruitment to the ACCESS Support Unit (ASU)
Recommendations:	The Joint Committee (JC) are asked to: <ul style="list-style-type: none">• Note the successful appointment of the Interim Director of the ACCESS Support Unit.
Enquiries to:	Names – Jo Thistlewood E-mail – jo.thistlewood@iow.gov.uk

1. Purpose

- 1.1. The purpose of this report is to update the Joint Committee (JC) on the recruitment of the Director of the ACCESS Support Unit position.

2. Background

- 2.1. At its meeting on 11 June 2018 the JC agreed a structure for a permanent ASU and that Essex County Council (ECC) be Host Authority. The report to the June JC also noted that ECC would “take forward the recruitment process for the ASU roles for which they will be responsible”. [Extract from para 5.1, item 10, JC agenda 11 June 2018]. The ASU structure is shown below.



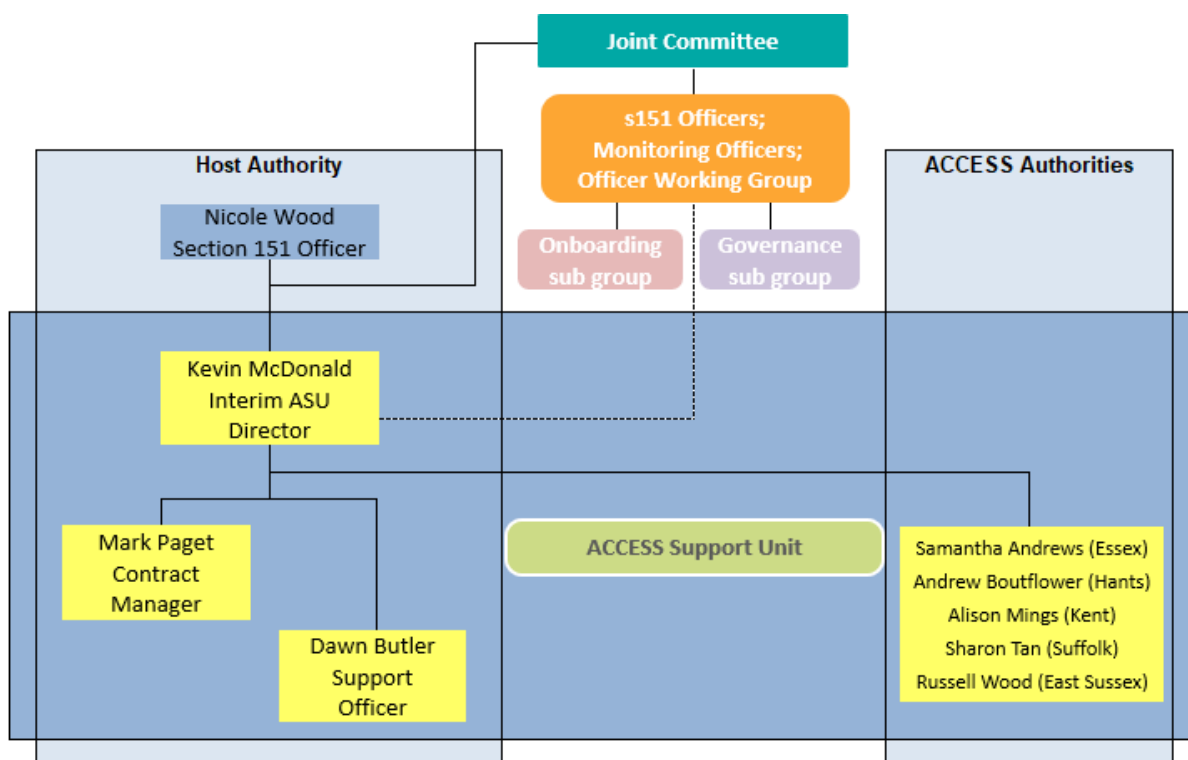
- 2.2. Updates have been brought to all subsequent JC meetings. At the meeting on 11 June 2019, members were advised that:
- Two external recruitment processes had failed to appoint a permanent Director;
 - An interim appointment, on either a secondment or permanent basis, would be sought from officers of the participating ACCESS Authorities;
 - The appointment process (application, shortlisting, s151 panel and JC panel) would follow those used in previous recruitment rounds; and
 - Both the s151 and JC panels would be constituted from members representing Authorities unconnected to the shortlisted candidates.
- 2.3. Following the last JC meeting, the recruitment process successfully concluded, with the appointment of Kevin McDonald as Interim Director of the ACCESS Support Unit.

3. Interim Director, ACCESS Support Unit recruitment outcome July 2019

- 3.1. As agreed by the JC, applications were sought from officers of participating ACCESS Authorities. By the closing date of Friday 28 June, one application was received from Kevin McDonald of Essex Pension Fund.
- 3.2. A conference call was held on 2 July, at which Margaret Lee (s151 Essex CC) briefed fellow s151 officers on the candidate, and it was agreed to recommend Mr McDonald for further interview.
- 3.3. Louise Aynsley (s151 Suffolk CC) and Ian Gutsell (s151 East Sussex CC) were joined by Alison Woods (Essex CC HR) at the 11 July s151 panel interview. It was determined that the candidate should proceed to the JC panel interview, which was held on the same day.
- 3.4. The JC panel was formed of Cllr Andrew Reid (JC Chairman & Suffolk Pension Fund Chairman); Cllr Ralph Sangster (Hertfordshire Pension Fund Chairman) and Cllr Vanessa Churchman (Isle of Wight Pension Fund Vice-Chairman). They were supported by Alison Woods (Essex CC HR). An interview with the candidate was conducted, and it was decided that they be recommended to Essex CC for the role of Interim Director, ACCESS Support Unit.
- 3.5. On 24 July 2019, Essex CC's Chief & Deputy Chief Officer Committee accepted the recommendation to offer the role to Mr McDonald.

4. Host Authority s151 officer

- 4.1. On 1 August 2019, Nicole Wood was appointed as s151 Officer at Essex County Council, Host Authority to the ACCESS Support Unit. Ms Wood succeeds Margaret Lee in this role. The ASU chart below names all individuals.



5. Recommendations

- 5.1. The Joint Committee notes:
- the appointment of Kevin McDonald as the Interim Director, ACCESS Support Unit; and
 - the appointment of Nicole Wood as s151 Officer at Essex County Council.

6. Background Papers

ACCESS Governance update - JC 26 April 2018 agenda item 9.

ACCESS Support Unit – JC 11 June 2018 agenda item 10

ACCESS Support Unit & Host Authority – JC 19 September agenda item 12

ACCESS Support Unit - JC 10 December 2018 agenda item 12

ACCESS Support Unit – JC 18 March 2019 agenda item 9

ACCESS Support Unit – JC 11 June 2019 agenda item 13